

# Music Theory Practice Quiz - Part I

The Bromfield School

NAME:

## PART I - TRIADS

DATE:

1. What is a triad?

2. Construct triads in the following measures to correspond with the label listed below each measure:



a. d minor triad

b. E Major triad

c. Ab Augmented triad

d. g diminished triad

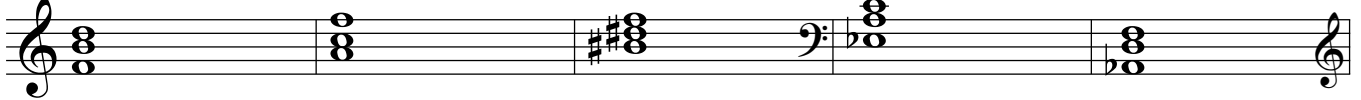
e. Bb Major triad

3. Triads organized in the order of third - fifth - root are said to be in what position? :

4. Triads organized in the order of fifth - root - third are said to be in what position? :

5. Triads organized in the order of root - third - fifth are said to be in what position? :

6. Label the following triads with the correct chord quality (major, minor, augmented, diminished) and position:



a.

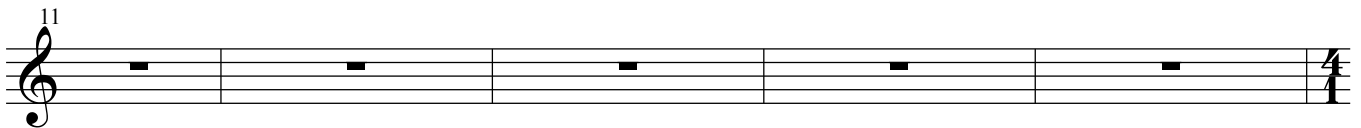
b.

c.

d.

e.

7. Rewrite the five triads which appear above in CLOSE spacing in number 6 on the five measures below into OPEN spacing



a.

b.

c.

d.

e.

NAME:

8. What major scale appears below?

9. Build triads on top of each note and label each triad with the proper Roman Numerals, both upper and lower case:

16

a.            b.            c.            d.            e.            f.            g.            h.

10. Write the correct Roman numeral for each chord below:

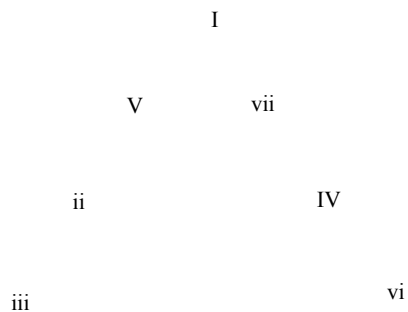
18

a.            b.            c.            d.            e.

11. On the three measures below, all in the key of C Major, identify the chord with Roman Numeral & Inversion number, if appropriate:

23

12. Drawing the correct arrows/lines indicating where each of the following chords may progress. You may also list each chord Roman Numeral, and then make a list of every chord that each chord may progress to if you prefer:



A I chord may progress to:

A V chord may progress to:

A ii chord may progress to:

A vi chord may progress to:

A iii chord may progress to:

A vii chord may progress to:

A IV chord may progress to: